

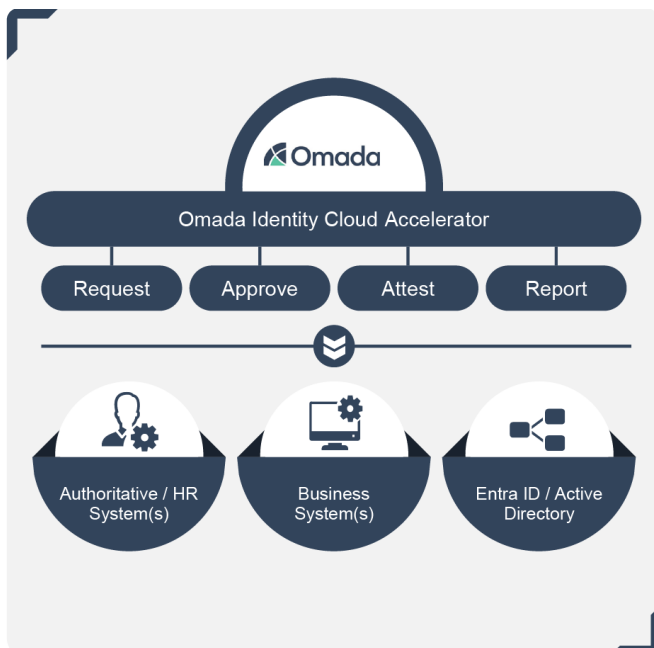
# Omada Identity Cloud Accelerator

Go live with Omada Identity Cloud in 12 weeks

**To ensure a fast and successful deployment to modern identity governance, the Omada Identity Cloud Accelerator Package provides a proven process for success.**

In the ever-evolving landscape of identity governance, legacy and in-house developed systems that once served as cornerstones of access management now hinder efficiency, security, and compliance. As organizations grapple with an increasingly complex network of users, applications, and data, the limitations of legacy and homegrown Identity Governance and Administration (IGA) systems have become glaringly apparent. These outdated solutions impede the ability to swiftly adapt to evolving business needs and emerging threats. The need for a modern IGA system is critical, as businesses seek agile, scalable, and future-ready solutions to address the complex challenges of identity management.

Migrating to a modern IGA solution can be challenging. Transitioning established processes and integrating new technologies may cause concerns about disruptions, data integrity, and the learning curve associated with adopting a new platform. Additionally, quick time-to-value is crucial; organizations need a fast, efficient transition that maintains both operational agility and security.



## Accelerate Your Migration to Modern IGA

To streamline migrations and IGA deployments, Omada created an Identity Cloud Accelerator Package. Prioritizing time-to-value, this package includes:

- A standardized approach for deployment
- A best-practice framework for process design
- Enablement for efficient user adoption

This approach builds a strong foundation for end-to-end access fulfillment, streamlines the migration journey, and enables businesses to quickly and effectively leverage the advanced capabilities of the Omada Identity Cloud.

Organizations implement Omada Identity Cloud with five value steps and a defined roadmap for future readiness.

## Deploy in 12 weeks

### 1. Establish

- **Build a strong IGA foundation for self-proficiency and direction.**

This step includes conducting our IGA assessment to understand your current IGA maturity, connecting to your Omada Identity Cloud instance, determining clean source data, and defining your value journey. These crucial steps set you up for long-term success.

### 2. Join

- **Gain insight into the actual state of identities and users' access with a governance overview of 'Who has access to what'.**

Data is collected from authoritative sources like HR and Active Directory (including user accounts, groups, and a sample access rule). Basic reports are then set up to identify orphaned or dormant accounts, ownership of accounts, and basic entitlements. This phase ensures data quality, providing valuable insights into your identities and users, giving you a governance overview.

### 3. Control

- **Perform access reviews and establish expected state to achieve compliance with business policies and regulations (e.g., ISO and NIST).**

An IdentityPROCESS+ fit/gap analysis is performed, which includes defining the access workflows (request, approval, recertification, reporting birthrights ). Governance features are then enabled, and a connection to Active Directory is established. By analyzing the fit and defining workflows, this step establishes a compliant access request and approval process, making you ready for a

### 4. Expand

- **Enable business efficiency through self-service access request and approval workflows.**

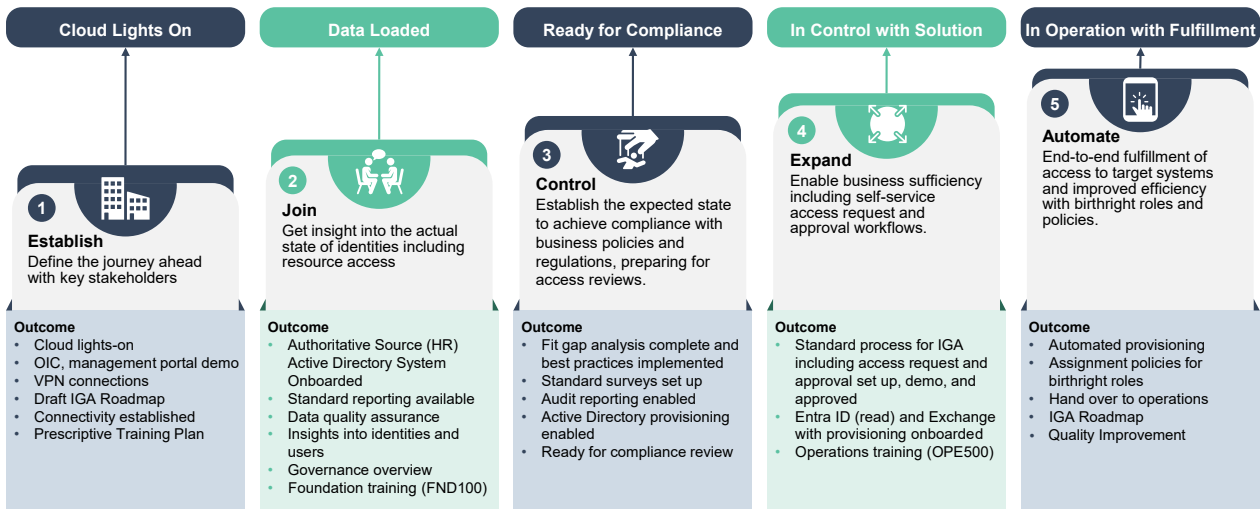
Standard IGA processes are implemented for access requests and approvals. Entra ID and Exchange are also onboarded. An IGA Roadmap Workshop is then held to define the next steps for your IGA value journey. This phase increases efficiency by implementing standard processes, expands your identity governance, and refines your IGA roadmap for further expansion.

### 5. Automate

- **Achieve end-to-end fulfillment of access to target systems and improved efficiency with birthright roles and policies.**

This phase automates user onboarding by provisioning access based on pre-defined birthright roles. These roles streamline access reviews and improve efficiency thanks to clear descriptions and classifications. Finally, with the project successfully handed over to operations, the IGA roadmap guides the next steps in your identity governance journey, ensuring long-term success. This step not only simplifies onboarding but also strengthens access control through automation and well-defined roles.

# Cloud Accelerator Outcomes



## Boost Your Deployment with Add-ons

From advanced assignment policies to expert post-go-live support and training, our add-ons offer the flexibility and support your organization needs. Whether it's onboarding contractors, managing service accounts, or integrating vendors, these add-ons maximize efficiency and value while ensuring long-term success in managing your identity landscape.

## The Omada Identity Cloud Accelerator Package Delivers Outcomes

In just 12 weeks, Omada customers can experience the benefits of :

- An onboarded authoritative source to read identity data
- A full integration to directory service (AD, Entra ID, etc.) and Exchange
- Governance and self-service capabilities
- Basic role model with birthrights and assignment policies based on identity attributes
- Training for self-sufficiency and continued learning
- A strategic customer-specific road map for further implementation

## About Omada

Omada, a global market leader in Identity Governance and Administration (IGA), offers a full-featured, enterprise-grade, cloud native IGA solution that enables organizations to achieve compliance, reduce risk, and maximize efficiency. Founded in 2000, Omada delivers innovative identity management to complex cloud, on-premises, and hybrid environments based on our proven best practice process framework and deployment approach.

For more information, go to [www.omadaidentity.com](http://www.omadaidentity.com)