

Omada Identity Analytics

Harness the Power of
AI for Stronger IGA



In today's dynamic business landscape, effectively managing user access and roles are critical for security, productivity, and regulatory compliance. However, traditional methods of manual role definition are often time-consuming, error-prone, and struggle to keep pace with organizational changes. This can lead to a tangled web of outdated permissions, security vulnerabilities, and inefficient access control processes.

Introducing Identity Analytics – the advanced data analytics within Omada Identity Cloud that empowers organizations to completely transform identity reporting and role management. Leveraging the power of Machine Learning (ML), Identity Analytics offers a powerful one-two punch:

- **Intelligent Role Mining:** Identity Analytics takes role discovery to a new level. Its intelligent engine analyzes user permissions and access needs to recommend optimal roles for each user. This data-driven approach ensures a perfect fit, minimizing wasted time and optimizing user productivity from the start.
- **Data-Driven Insights:** Identity Analytics powers dynamic new experiences within Omada Identity Cloud. Replacing static, tabular reports with enhanced reporting for a more engaging and insightful experience, interactive dashboards bring identity data to life, empowering teams to analyze user roles and access controls with unparalleled clarity.

Identity Analytics equips Identity Governance and Administration (IGA) teams with the tools they need for optimal efficiency, unwavering compliance adherence, and a strengthened security posture.

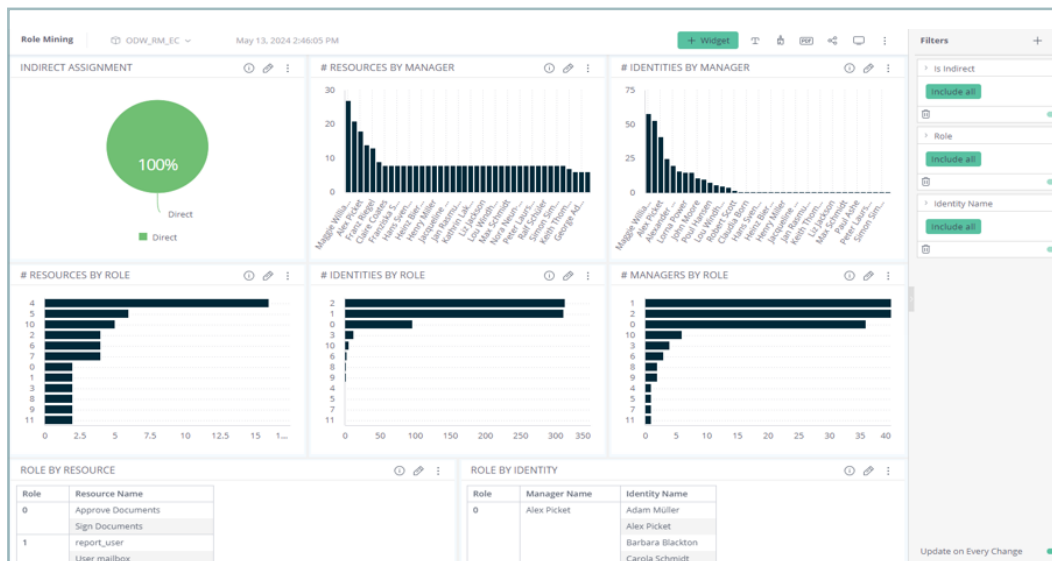
Role Mining Starts With Discovery

Manually defining organizational roles is a challenging, error-prone process that becomes increasingly cumbersome as a company grows. This results in inconsistencies and outdated roles, leaving users with unnecessary permissions that create security vulnerabilities.

Identity Analytics tackles these challenges with Role Mining, a powerful ML engine addition that analyzes resource and identity data to automatically discover and define roles based on an organization's access patterns. This innovative approach offers a multitude of benefits:

- **Streamlined Role Discovery:** Automate role definition, significantly reducing approval times and ensuring roles are always up-to-date.
- **Enhanced Security Posture:** Identify and eliminate unnecessary permissions, minimizing the risk of unauthorized access.
- **Reduced Complexity:** Eliminate overlaps and redundancies, simplifying role management and boosting overall efficiency.

Leveraging role discovery, organizations can dramatically improve role creation and management while enforcing precise access controls. This not only eliminates security risks but also unifies the entire process for enhanced efficiency and effectiveness.



The role mining dashboard unveils hidden patterns in user activity, empowering organizations to automate role management, optimize access control, and make smarter security decisions.

Personalized Role Recommendations

By leveraging ML and user activity, Identity Analytics takes role mining to the next level, unlocking a wealth of insights that enable organizations to:

- **Automate Role Recommendations:** Through intelligent personalization, role recommendations for each user can be recommended to enable better decision-making by managers to assign the most appropriate roles based on individual needs.
- **Simplified Access Control Decisions:** Self-service functionalities and clear data-driven analytics allow managers to make informed access control decisions with greater efficiency and confidence.
- **Minimize Permission Risk:** Data-driven recommendations significantly reduce the risk of assigning incorrect permissions, significantly boosting overall security posture.
- **Boost User Productivity:** Faster and more accurate role assignments ensure users gain access to the resources they need sooner, maximizing their productivity.

Identity Analytics' data-driven approach delivers automated, precise role assignments and minimizes permission risks, ultimately boosting security and user productivity.

Actionable Insights with Identity Analytics Reporting

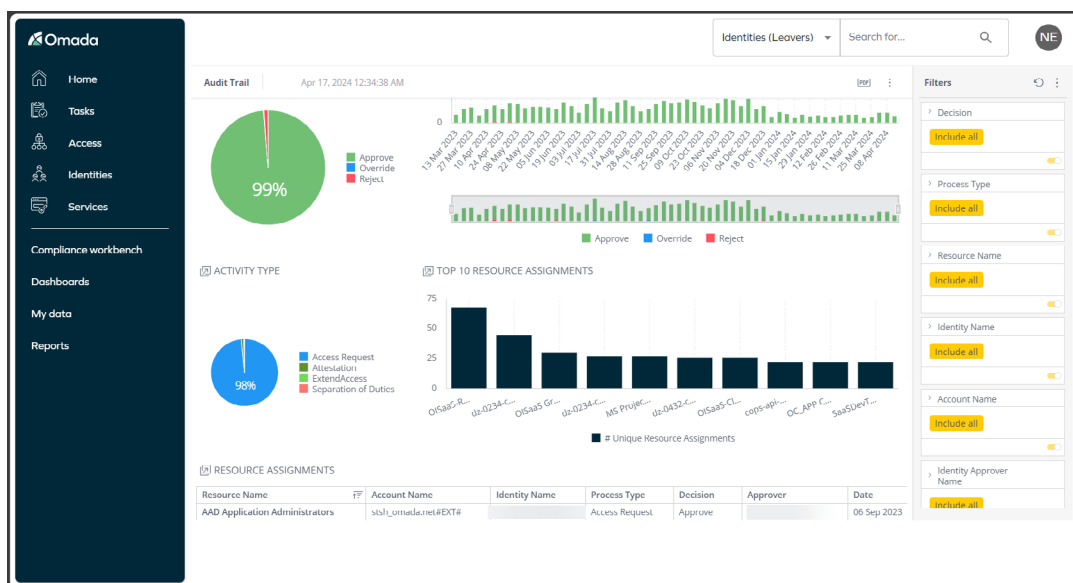
Proving compliance with regulations and internal policies can be a significant challenge for IGA teams. Cumbersome, static reports and siloed data make it difficult to analyze trends, identify areas for improvement, and demonstrate a holistic view of access control practices. Identity Analytics breaks down these barriers with dynamic reporting. This innovative approach leverages advanced data analysis techniques to transform raw identity data into intuitive dashboards and reports. The result? Empowered IGA teams with the actionable insights they need to optimize workflows, strengthen access controls, and ensure ongoing compliance in a verifiable manner.

Audit Trail Reporting Made Easy

One key aspect of Identity Analytics' is its intuitive dashboard for Audit Trail reporting. This user-friendly interface allows IGA teams to to:

- **Respond swiftly to audit inquiries:** Powerful filters and clear, at-a-glance visualizations help teams quickly answer questions and demonstrate compliance.
- **Uncover access control trends:** Identify patterns in user behavior and access requests to gain a holistic view of control effectiveness.
- **Fuel proactive analysis:** Data-driven insights enable proactive identification of potential weaknesses, allowing for continuous improvement of access control practices.
- **Strengthen security posture:** By addressing vulnerabilities early, organizations can create a more secure and efficient access control environment.
- **Free up valuable time:** Reduced time spent tackling audit reports allows IGA teams to focus on strategic initiatives.

Identity Analytics transforms audit readiness from a time-consuming burden to a streamlined process, empowering IGA teams to focus on what matters most – securing their organization.



The intuitive audit trail dashboard empowers teams to quickly analyze user activity, identify anomalies, and ensure ongoing compliance.

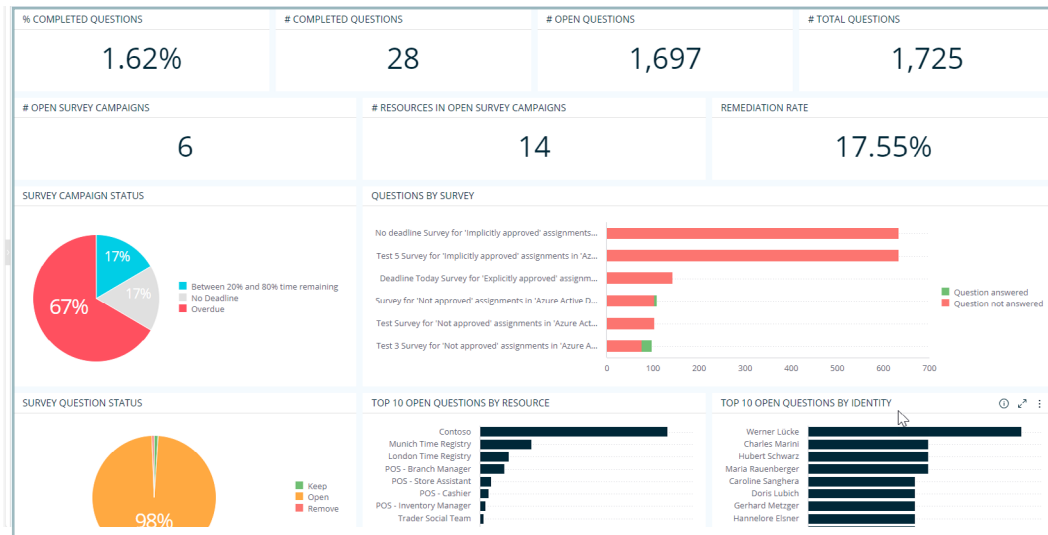
Optimizing Certifications with Data-Driven Insights

Traditional reporting tools lack the insight IGA teams need to determine the efficacy of certification campaigns. Identity Analytics streamlines the certification process with the following capabilities:

- **Campaign Visibility and Tracking:** Real-time dashboards offer insights into campaign progress. With this, teams can monitor progress, pinpoint bottlenecks in the certification process, and adjust strategies as needed to ensure all users are appropriately certified.
- **Proactive Risk Management:** Advanced reporting surfaces users with missing or expiring certifications. This allows organizations to implement targeted mitigation strategies, such as access restrictions or reminders, to continuously ensure compliance and minimize security vulnerabilities.

- **Demonstrating Compliance:** Identity Analytics' comprehensive reporting provides clear and verifiable documentation of certification completion rates and access control practices. This equips organizations with what they need to easily demonstrate compliance with internal regulations and external audits.

By leveraging data-driven insights from Identity Analytics reporting, IGA teams can elevate certification campaigns from a manual, time-consuming process to a streamlined, efficient, and demonstrably compliant program.



The certification dashboard enables IGA teams to maximize campaign effectiveness and simplifies the process of maintaining regulatory adherence.

Unleash the Power of Identity Analytics

By leveraging Identity Analytics, organizations can streamline role management, enhance security, and equip their IGA team with the data-driven insights they need for optimal campaign management and unwavering compliance adherence.

Ready to take your IGA to the next level?

Schedule a demo today to see how Omada Identity Analytics can revolutionize your organization.

[Schedule a Demo Today](#)



Omada, a global market leader in Identity Governance and Administration (IGA), offers a full-featured, enterprise-grade, cloud native IGA solution that enables organizations to achieve compliance, reduce risk, and maximize efficiency. Founded in 2000, Omada delivers innovative identity management to complex hybrid environments based on our proven best practice process framework and deployment approach.